

VÁLVULAS HIDRÁULICAS

Hydraulic valves
Valves hydrauliques
Valvole idrauliche

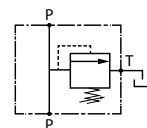
Limitadora de presión en línea/regulación tornillo 250 bar



Pressure relief valve in line (screw control) 250 bar aluminium

Étrangleur débit bidirectionnel (molette métallique) Nouveau design

Valvola di regolazione pressione in linea / regolaz. a vite 250 bar -in alluminio



Referencia Part n°	ROSCA THREAD	CAUDAL MÁX.(l/min) MAX. FLOW (l/min)	TARAJE (bar) SETTING (bar)	CAMPO REG. (bar) REG. RATE (bar)	COLOR COLOUR	€
FPM D CB 40 P 3/8 05	3/8" BSP	40	5	5-50	Blanco / White*	77,95
FPM D CB 40 P 3/8 10	3/8" BSP	40	30	30-100	Amarillo / Yellow*	77,95
FPM D CB 40 P 3/8 20	3/8" BSP	40	50	50-220	Verde / Green*	77,95
FPM D CB 40 P 3/8 20-180	3/8" BSP	40	50	50-220	Verde / Green*	82,49
FPM D CB 40 P 1/2 05	1/2" BSP	40	5	5-50	Blanco / White*	77,95
FPM D CB 40 P 1/2 10	1/2" BSP	40	30	30-100	Amarillo / Yellow*	77,95
FPM D CB 40 P 1/2 20	1/2" BSP	40	50	50-220	Verde / Green*	77,95
FPM D CB 70 P 1/2 05	1/2" BSP	80	5	5 - 50	Blanco / White*	98,01
FPM D CB 70 P 1/2 10	1/2" BSP	80	30	30-100	Amarillo / Yellow*	98,01
FPM D CB 70 P 1/2 20	1/2" BSP	80	80	80-280	Verde / Green*	98,01
FPM D CB 70 P 3/4 05	3/4" BSP	80	5	5 - 50	Blanco / White*	98,01
FPM D CB 70 P 3/4 10	3/4" BSP	80	5	30-100	Amarillo / Yellow*	98,01
FPM D CB 70 P 3/4 20	3/4" BSP	80	80	80-280	Rojo/ red*	98,01

*Color del muelle / *Spring colour / *Couleur du ressort / *Colore della molla

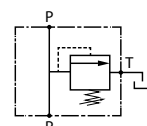
Limitadora de presión en línea/regulación volante 250 bar



Pressure relief valve in line (steering-knob control) 250 bar

Limiteur pression en ligne/régulation par molette - 250 bar

Valvola di regolazione pressione in linea / regolaz. a volantino 250 bar -in alluminio



Referencia Part n°	ROSCA THREAD	CAUDAL MÁX.(l/min) MAX. FLOW (l/min)	TARAJE (bar) SETTING (bar)	CAMPO REG. (bar) REG. RATE (bar)	COLOR COLOUR	€
FPM D CB 40 R 3/8 05	3/8" BSP	40	5	5-50	Blanco / White*	91,60
FPM D CB 40 R 3/8 10	3/8" BSP	40	30	30-100	Amarillo / Yellow*	85,81
FPM D CB 40 R 3/8 20	3/8" BSP	40	50	50-220	Verde / Green*	85,81
FPM D CB 40 R 1/2 05	1/2" BSP	40	5	5-50	Blanco / White*	85,81
FPM D CB 40 R 1/2 10	1/2" BSP	40	30	30-100	Amarillo / Yellow*	91,39
FPM D CB 40 R 1/2 20	1/2" BSP	40	50	50-220	Verde / Green*	85,81
FPM D CB 70 R 1/2 05	1/2" BSP	80	5	5-50	Blanco / White*	105,87
FPM D CB 70 R 1/2 10	1/2" BSP	80	30	30-100	Amarillo / Yellow*	105,87
FPM D CB 70 R 1/2 20	1/2" BSP	80	80	80-280	Verde / Green*	105,87
FPM D CB 70 R 3/4 05	3/4" BSP	80	5	5-50	Blanco / White*	105,87
FPM D CB 70 R 3/4 10	3/4" BSP	80	30	30-100	Amarillo / Yellow*	99,18
FPM D CB 70 R 3/4 20	3/4" BSP	80	80	80-280	Verde / Green*	105,87

*Color del muelle / *Spring colour / *Couleur du ressort / *Colore della molla

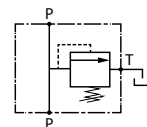
Limitadora de presión en línea/tornillo-cuello para panel 250 bar



Pressure relief valve in line (screw control) panel 250 bar

Limiteur pression en ligne pour panneau/régulation par vis- 250 bar

Valvola regolaz. pressione in linea / regol. a vite, montaggio a pannello, 250 bar - alluminio



Referencia Part n°	ROSCA THREAD	TARAJE (bar) SETTING (bar)	CAMPO REG. (bar) REG. RATE (bar)	COLOR COLOUR	CAUDAL MÁX.(l/min) MAX. FLOW (l/min)	€
FPM D CB 40F P 3/805	3/8" BSP	5	5-50	Blanco / White*	40	95,52
FPM D CB 40F P 3/810	3/8" BSP	30	30-100	Amarillo / Yellow*	40	95,52
FPM D CB 40F P 3/820	3/8" BSP	50	50-220	Verde / Green*	40	95,52
FPM D CB 40F P 1/205	1/2" BSP	5	5-50	Blanco / White*	40	95,52
FPM D CB 40F P 1/210	1/2" BSP	30	30-100	Amarillo / Yellow*	40	95,52
FPM D CB 40F P 1/220	1/2" BSP	50	50-220	Verde / Green*	40	95,52
FPM D CB 70F P 1/205	1/2" BSP	5	5-50	Blanco / White*	80	118,14
FPM D CB 70F P 1/210	1/2" BSP	30	30-100	Amarillo / Yellow*	80	118,14
FPM D CB 70F P 1/220	1/2" BSP	80	80-280	Verde / Green*	80	118,14
FPM D CB 70F P 3/405	3/4" BSP	5	5-50	Blanco / White*	80	118,14
FPM D CB 70F P 3/410	3/4" BSP	30	30-100	Amarillo / Yellow*	80	118,14
FPM D CB 70F P 3/420	3/4" BSP	80	80-280	Verde / Green*	80	118,14

*Color del muelle / *Spring colour / *Couleur du ressort / *Colore della molla

VÁLVULAS HIDRÁULICAS

Hydraulic valves
Valves hydrauliques
Valvole idrauliche

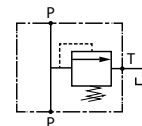
Limitadora de presión en línea/volante-cuello para panel 250 bar



Pressure relief valve in line (steering-knob control) panel 250 bar

Limiteur pression en ligne pour panneau/régulation par molette - 250bar

Valvola regolaz. pressione in linea /regolaz. a volantino, montaggio a pannello, 250 bar - alluminio



Referencia Part n°	ROSCA THREAD	CAUDAL MÁX. (l/min) MAX. FLOW (l/min)	TARAJE (bar) SETTING (bar)	CAMPO REG. (bar) REG. RATE (bar)	COLOR COLOUR	€
FPM D CB 40F R 3/805	3/8" BSP	40	5	5-50	Blanco / White*	110,11
FPM D CB 40F R 3/810	3/8" BSP	40	30	30-100	Amarillo / Yellow*	103,41
FPM D CB 40F R 3/820	3/8" BSP	40	50	50-220	Verde / Green*	103,41
FPM D CB 40F R 1/205	1/2" BSP	40	5	5-50	Blanco / White*	110,11
FPM D CB 40F R 1/210	1/2" BSP	40	30	30-100	Amarillo / Yellow*	103,41
FPM D CB 40F R 1/220	1/2" BSP	40	80	50-220	Verde / Green*	103,41
FPM D CB 70F R 1/205	1/2" BSP	80	5	5-50	Blanco / White*	130,28
FPM D CB 70F R 1/210	1/2" BSP	80	30	30-100	Amarillo / Yellow*	126,00
FPM D CB 70F R 1/220	1/2" BSP	80	50	80-280	Verde / Green*	126,00
FPM D CB 70F R 3/405	3/4" BSP	80	5	5-50	Blanco / White*	126,00
FPM D CB 70F R 3/410	3/4" BSP	80	30	30-100	Amarillo / Yellow*	126,00
FPM D CB 70F R 3/420	3/4" BSP	80	80	80-280	Verde / Green*	126,00

*Color del muelle / *Spring colour / *Couleur du ressort / *Colore della molla

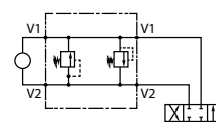
Limitadora presión doble línea/regulación tornillo 250 bar



Pressure relief valve double in line (steel screw control) 250 bar

Limiteur pression double en ligne/régulation par vis- 250 bar

Valvola di regolazione pressione doppia in linea / regolaz. a vite 250 bar



Referencia Part n°	ROSCA THREAD	CAUDAL MÁX. (l/min) MAX. FLOW (l/min)	TARAJE (bar) SETTING (bar)	CAMPO REG. (bar) REG. RATE (bar)	€
FPMD40ILP3/805	3/8" BSP	40	5	5-50	147,92
FPMD40ILP3/810	3/8" BSP	40	30	30-100	147,92
FPMD40ILP3/820	3/8" BSP	40	50	50-220	147,92
FPMD40ILP3/835	3/8" BSP	40	80	80-350	147,90
FPMD70ILP1/205	1/2" BSP	80	5	5-50	175,96
FPMD70ILP1/210	1/2" BSP	80	30	30-100	175,96
FPMD70ILP1/220	1/2" BSP	80	50	80-280	175,96
FPMD70ILP1/235	1/2" BSP	80	80	120-320	175,96

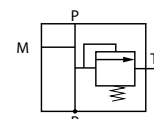
Limitadora presión en línea /regulación tornillo acero



Pressure relief valve in line (screw control) steel

Limiteur pression en ligne/régulation par vis acier

Valvola di regolazione pressione in linea / regolaz. a vite in acciaio



Referencia Part n°	ROSCA THREAD	CAUDAL MÁX. (l/min) MAX. FLOW (l/min)	PRESIÓN MÁX. (bar) MAX. PRESSURE (bar)	TARAJE (bar) SETTING (bar)	CAMPO REG. (bar) REG. RATE (bar)	€
VMP 3/8 50-250BAR	3/8" BSP	45	250	130	50-250	50,47
VMP 3/8 80-300BAR	3/8" BSP	45	300	150	80-300	50,47
VMP 1/2 50-250BAR	1/2" BSP	70	250	130	50-250	55,47
VMP 1/2 80-300BAR	1/2" BSP	70	300	180	80-300	55,47
VMPP 3/4 20-200BAR	3/4" BSP	120	200	150	20-200	147,72
VMP 3/4 50-250BAR	3/4" BSP	90	250	130	50-250	73,67
VMP 3/4 80-300BAR	3/4" BSP	90	300	150	80-300	73,67
VMPP 3/4 50-400BAR	3/4" BSP	90	400	180	50-400	147,72
VMPP 1 50-400BAR	1" BSP	160	400	180	50-400	171,15

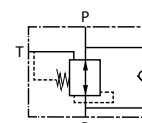
Reductora presión en línea 210 bar 3/8" con retorno



Pressure reducing valve in line 210 bar 3/8" with check valve

Reducteur pression en ligne 210 bar 3/8" avec clapet

Valvola di riduzione pressione in linea 210 bar 3/8" con antiritorno



Referencia Part n°	ROSCA THREAD	CAUDAL MÁX. (l/min) MAX. FLOW (l/min)	PRESIÓN MÁX. (bar) MAX. PRESSURE (bar)	TARAJE (bar) SETTING (bar)	CAMPO REG. (bar) REG. RATE (bar)	COLOR COLOUR	€
FPRPUD30CB053/8P	3/8" BSP	30	210	5	5 - 35	Blanco / White*	182,21
FPRPUD30CB103/8P	3/8" BSP	30	210	10	10 - 60	Amarillo / Yellow*	182,21
FPRPUD30CB203/8P	3/8" BSP	30	210	15	15-100	Verde / Green*	213,87
FPRPUD30CB353/8P	3/8" BSP	30	210	35	35-180	Rojo / Red*	213,87

*Color del muelle / *Spring colour / *Couleur du ressort / *Colore della molla